



# Orwak 3610

## Benefits

- Savings on your waste collection
- Tidy premises
- Space and time saving
- Compliance to meet your legal obligations

## Features

- Front loading
- Large loading aperture
- Sliding door
- Equipped with autostart
- High performance
- 50-ton big baler
- Generates 550 kg bales
- Quiet operation
- Fast cycle time



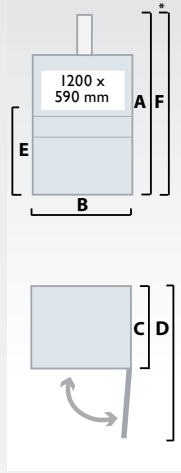
## Technical specifications

### Dimensions

#### 3610

- A: 3566 mm
- B: 1770 mm
- C: 1321 mm
- D: 2680 mm
- E: 1262 mm
- F: 2390 mm

\*Transport Height



### Loading aperture

Width: 1200 mm  
Depth: 590 mm

### Cycle time

33 secs

### Press force

(HP) 50 ton, 500 kN

### Bale size

Width: 1200 mm  
Depth: 900 mm  
Height: 1140 mm

### Bale weight

Cardboard: Up to 550 kg

### Chamber dimension (internal)

Width: 1200 mm  
Depth: 900 mm  
Height: 1735 mm

### Weight (machine)

Total: 2300 kg

### Noise level

63.9 dB (A)

### Protection class

IP 55

### Operating power

3-phase 3x400 V, 50 Hz

### Electrical connection

5 pin CEE-plug, 16 A

### Operating voltage

Via transformer 24 V AC/DC

### Paint

Two-part paint and powder coat with phosphatising as base

### Oil volume/type

77 l ISO VG 32-68 SAE 10  
from +5 °C and warmer

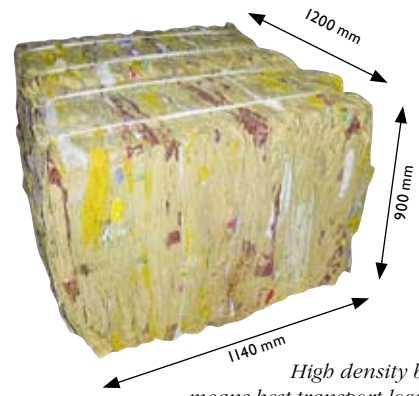
### Hydraulical data

Working pressure (HP): 200 bar  
Relief pressure (HP): 220 bar  
Press force (HP): 50 ton, 500 kN  
Piston stroke: 1200 mm  
Press force per cm<sup>2</sup> (HP): 4.86 kg

# High capacity baler produces 550 kg bales

Companies with large amounts of packaging materials need a quick, safe and profitable way to handle them. The brand new Orwak 3610, our largest and strongest front loading baler, is perfect for the job!

With a press force of 50 ton it generates high density bales that weigh up to 550 kg. These commercial bales are secured by polyester straps or by steel wires.



*High density bales means best transport logistics for maximum pay load per truck and reduced CO<sub>2</sub>-emission*

## Silent operation contributes to a better working environment

Due to a new type of hydraulics, Orwak has introduced "the silent family" - a line of balers with low sound emission. A silent operating machine contributes to improving the working environment for the employees.

## Short cycle time

Orwak 3610 is fast with a cycle time of only 33 seconds.



*Sliding door with autostart function*

*Press force 50 ton  
Bale weight up to 550 kg*

*Switch between HP and LP*

*Safe door opening*

## Sliding door and autostart for fast and convenient compaction

For fast and convenient loading Orwak 3610 has a sliding door that opens automatically after each cycle. An autostart function allows the baler to start compacting the material as soon as the door closes.

## Our promise to You!

- Orwak financial solutions
- Orwak non-stop service

*For further information please contact Your local Orwak dealer.*

## The Orwak 3610 takes care of most of your waste

### Paper

- Cardboard
- Shredded
- Paper sacks

### Metal Cans

- Aluminium cans
- Food cans
- Paint cans

### Other metals

- Steel straps

### Plastic foil

- Shrink film (LP)
- Plastic bags (LP)

### Plastic containers

- PET bottles
- Jugs/bottles

### Other plastics

- Plastic straps

### Semi-dry Waste

- Bagged general waste

### Wet

- Juice boxes,
- Tetra paks

### Special

- Steel drums
- Hazardous waste

- Perfect choice
- OK
- Other materials contact us

*For more info. contact us or visit our website [www.orwak.com](http://www.orwak.com)  
We reserve the right to make changes to specifications without prior notice.  
Bale/bag/bin weights are dependent upon material type.*



Making sure less is more

[www.orwak.com](http://www.orwak.com)