



Orwak 9020

Benefits

- Savings on your waste collection
- Tidy premises
- Space saving
- Ability to segregate waste
- Compliance to meet your legal obligations

Features

- Top loading
- Easy to use
- High performance
- Innovative design, technically superior
- Multi chambers



Technical specifications

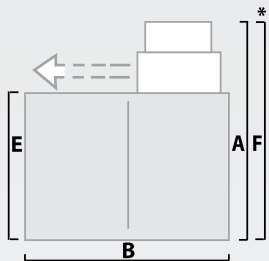
Dimensions

9020

- A: 2470 mm
- B: 2480 mm
- C: 968 (1135^l) mm
- D: 2175 mm
- E: 1380 mm
- F: 1900 mm

*Transport Height, must be ordered

^l Including strap holders



Loading aperture

- Width: 1100 mm
- Depth: 700 mm

Cycle time

35 secs

Press force

20 ton, 200 kN

Bale size

- Width: 1100 mm
- Depth: 700 mm
- Height: 800 mm

Bale weight

- Cardboard: Up to 200 kg
- Plastic: Up to 300 kg

Chamber dimension (internal)

- Width: 1100 mm
- Depth: 700 mm
- Height: 1120 mm

Weight (machine)

- Total: 1580 kg
- Only chamber: 1100 kg
- Only press unit: 480 kg

Noise level

< 70 db (A)

Protection class

IP 55

Operating power

3-phase 3x400 V, 50 Hz

Electrical connection

CEE plug/16 A, 10 A fuse

Paint

Two-part paint and powder coat with phosphatising as base

Oil volume/type

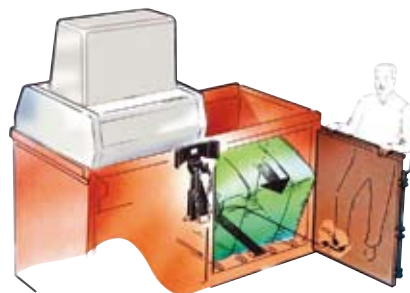
16,5 l ISO VG 32-68 SAE 10 from +5 °C and warmer

Hydraulical data

- Working pressure: 200 bar
- Relief pressure: 230 bar
- Press force: 20 ton, 200 kN
- Piston stroke: 710 mm
- Press force per cm²: 2,6 kg

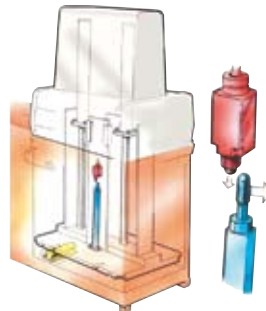
A top loading, strong partner

Our real heavy weight. An extendible system for companies with large amounts of packaging materials, recyclables etc. Compacting bales up to 300 kg (plastic). The 9020 is simple and easily extended with extra chambers when your needs increase. The press head is extremely easily manoeuvred sideways over the correct chamber.

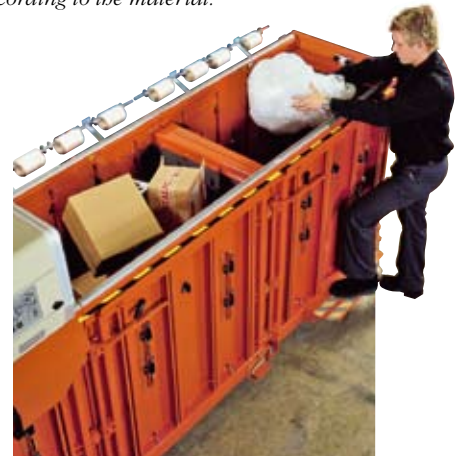


Automatic uneven load protection

The patented Orwak design feature prevents accidents and break-down due to uneven loading caused by the wrong materials being placed in the chamber.



The press force can be regulated individually for each chamber, according to the material.



Every chamber has a built-in patented automatic bale ejection system. Personal safety is our priority.

Our promise to You!

- Orwak financial solutions
- Orwak non-stop service

For further information please contact Your local Orwak dealer.

The Orwak 9020 takes care of most of your waste

Paper

- Cardboard
- Shredded
- Paper sacks

Metal Cans

- Aluminium cans
- Food cans
- Paint cans

Other metals

- Steel straps

Plastic foil

- Shrink film
- Plastic bags

Plastic containers

- PET bottles
- Jugs/bottles

Other plastics

- Plastic straps

Semi-dry Waste

Bagged general waste

Wet

Juice boxes, Tetra paks

Special

Steel drums
Hazardous waste

- Perfect choice
- OK
- Other materials contact us

For more info, contact us or visit our website www.orwak.com
We reserve the right to make changes to specifications without prior notice.
Bale/bag/bin weights are dependent upon material type.

AB Orwak

Box 58, SE-576 22 Sävsjö, Sweden
Tel: +46 382-157 00, Fax: +46 382-106 07
E-mail: info@orwak.se



Making sure less is more

www.orwak.com